



# Poseidon Deepwater Solutions

## Technical Data

20,000 psi rated  
Cracking Pressure  
75 psi  
Cv 0.33

**Temperature Range**  
32F to 180F

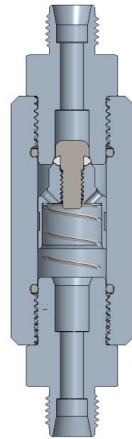
**Qualification**  
Qualified to API 16D on  
NAS 11 water

**Operating Mediums**  
Water-based fluids  
Oil-based fluids

**Material Construction**  
Body 316 SS  
Sealing Seat- N50  
Poppet Body – 316 SS  
Poppet Nose – 17-4  
Main Seal – UHMW  
Seals – PTFE

**Connections**  
1/4" MP  
1/4" JIC  
1/4" NPT  
1/4" Swagelok

## KRATOS 1/4" CHECK VALVE



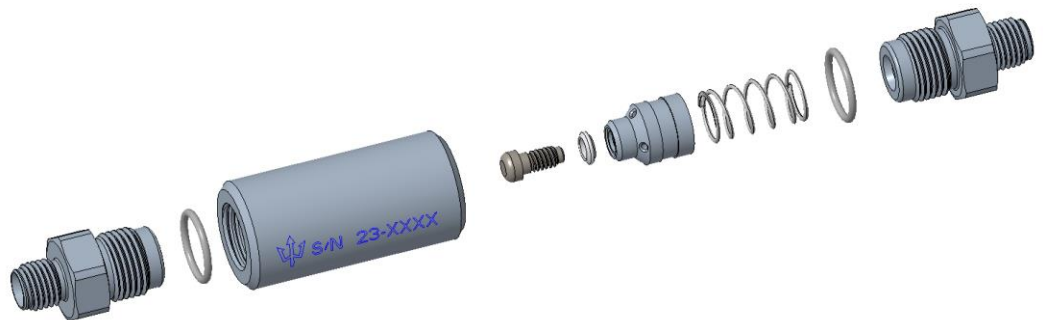
The 20,000 psi rated KRATOS check valve is available in a 1/4" trade size. Unlike traditional check valves the sealing mechanism is tolerant of debris.

The check poppet features a dual sealing system with a soft seal for low pressure contact, and a metal to metal interface once pressure builds.

Long term field trials show an order of magnitude improvement in life over conventional check valves.

*Repairable – The KRATOS is field repairable with minimal effort. The end caps are symmetrical allowing a fully redundant seal seat during operation.*

*Configurable – The KRATOS is made with end caps on both ends which can have different connections. This allows the check valve to have native connections or be used as an adapter from one connection to the next, which can eliminate adapters, fittings, headaches, etc. (pressure rating based on lowest rating of end adapter)*



**Warranty**  
12/18 Against Materials,  
Craftsmanship, and Defects.  
*Full 3-year field warranty  
for repairability*

Contact PDS Sales for detailed dimensional information and custom configurations

[www.poseidondeepwatersolutions.com](http://www.poseidondeepwatersolutions.com)

Sales@poseidonds.com

1422 Vanderwilt Ln Ste A - Katy, TX - 77449

Office 281-725-0030

R001



# Poseidon Deepwater Solutions

## Technical Data

20,000 psi rated  
Cracking Pressure  
75 psi  
Cv 0.33

**Temperature Range**  
32F to 180F

**Qualification**  
Qualified to API 16D on  
NAS 11 water

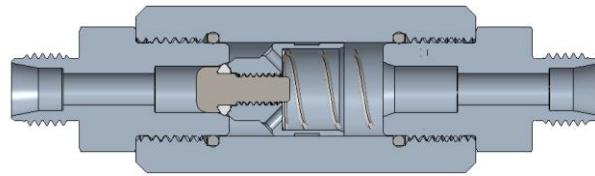
**Operating Mediums**  
Water-based fluids  
Oil-based fluids

**Material Construction**  
Body 316 SS  
Sealing Seat- N50  
Poppet Body – 316 SS  
Poppet Nose – 17-4  
Main Seal – UHMW  
Seals – PTFE

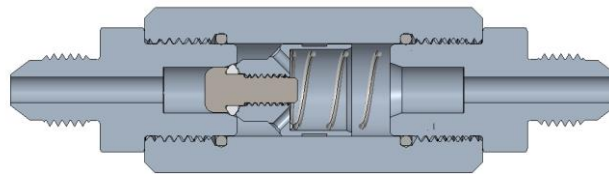
**Connections**  
1/4" MP  
1/4" JIC  
1/4" NPT  
1/4" Swagelok

## KRATOS

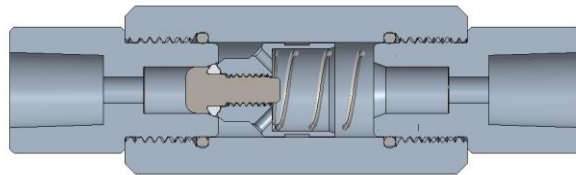
### 1/4" CHECK VALVE STANDARD CONFIGURATIONS



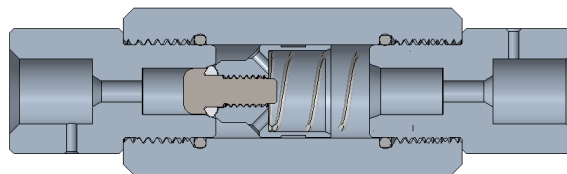
**K2-100 : 1/4" Tubing, 5,000 psi**



**K2-101 : 1/4" JIC, 5,000 psi**



**K2-102 : 1/4" NPT, 15,000 psi**



**K2-103 : 1/4" Medium Pressure,  
20,000 psi**

**Warranty**  
12/18 Against Materials,  
Craftsmanship, and Defects.  
*Full 3-year field warranty  
for reparability*

Contact PDS Sales for detailed dimensional information and custom configurations